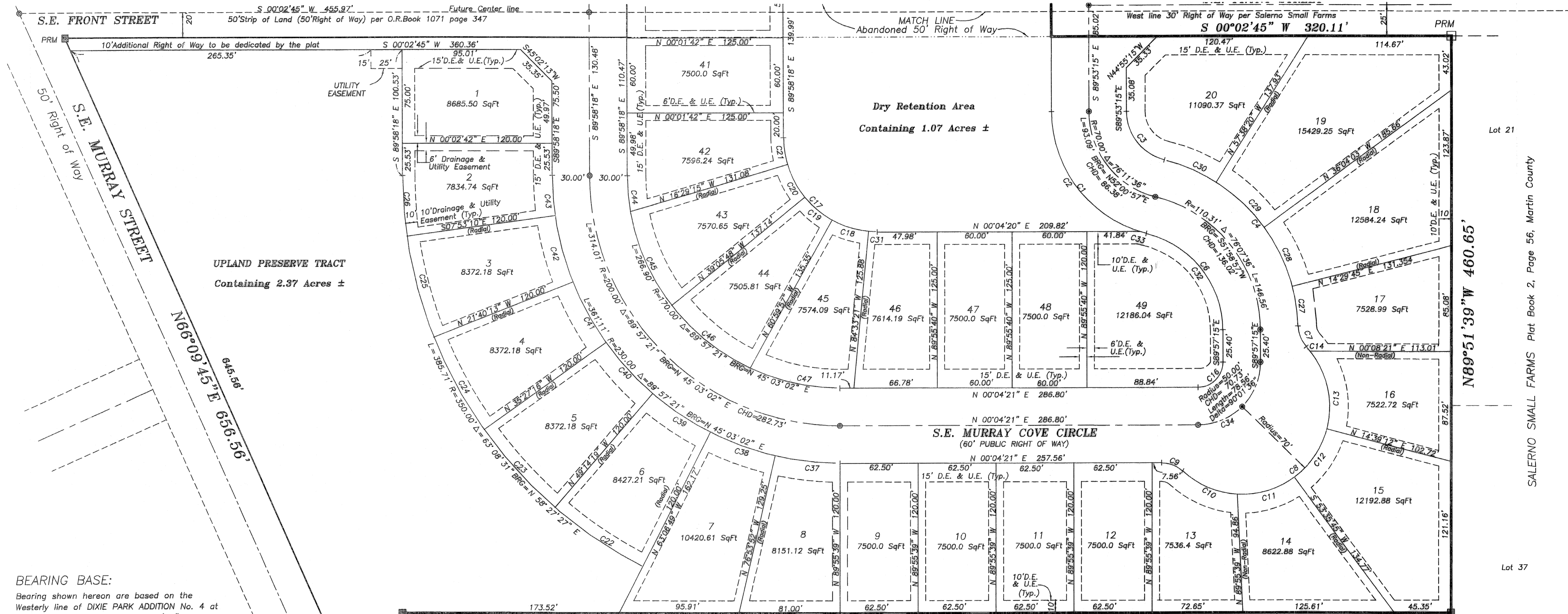
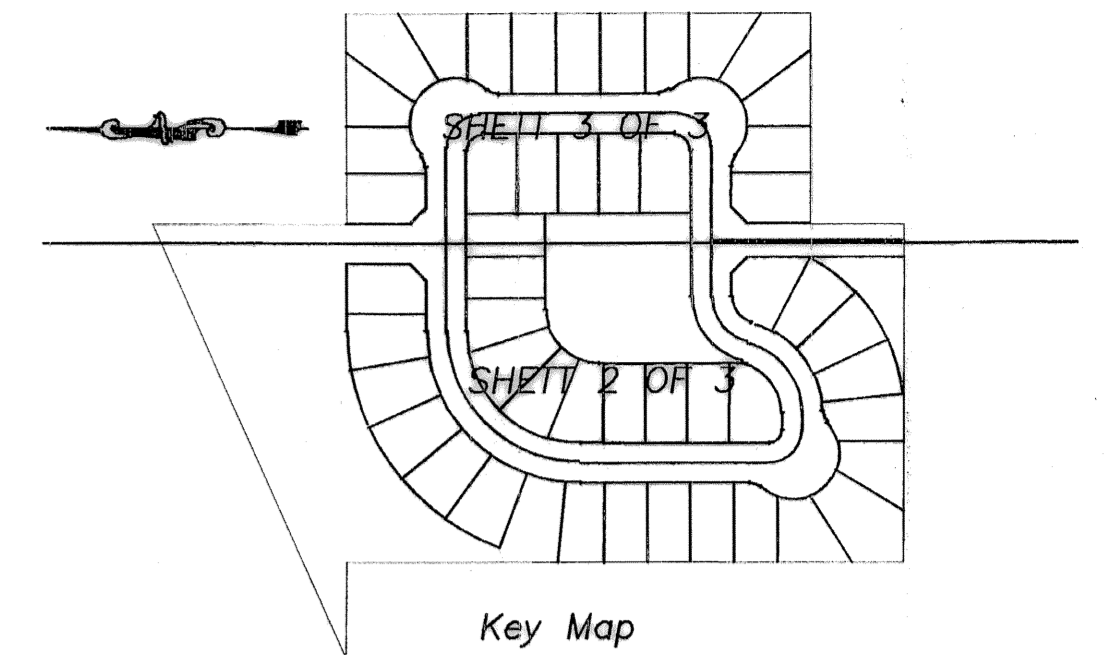
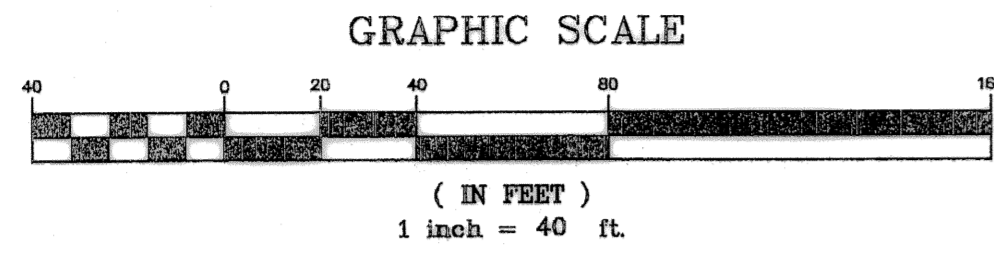
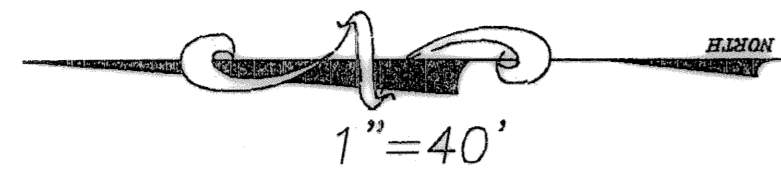


Plat of Murray Cove

Lying in Section 25, Township 38 South, Range 41 East, Martin County, Florida.
Being a replat of a portion of SALERNO SMALL FARMS, as recorded in
Plat Book 2, Page 56, Public Records of Martin County, Florida.



BEARING BASE:

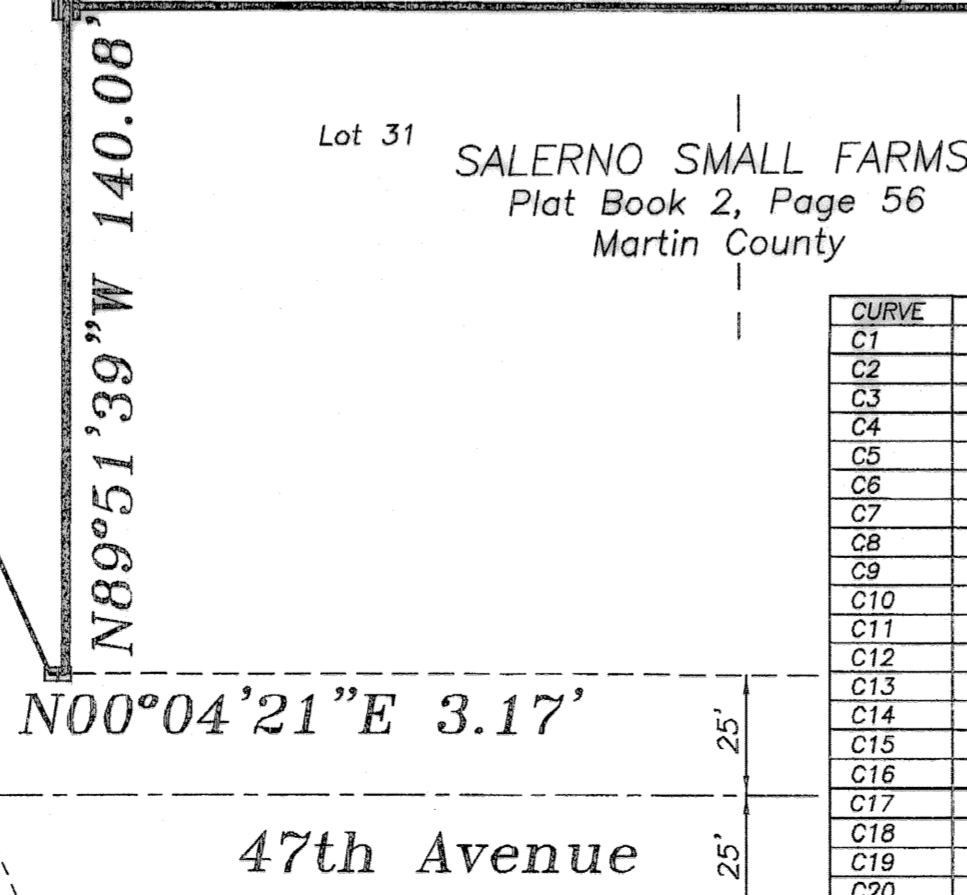
Bearing shown hereon are based on the Westerly line of DIXIE PARK ADDITION No. 4 at the Base Bearing of South 00°02'45"W. All other Bearing shown hereon are relative to said Base Bearing.

NOTES:

1. This plat, as recorded in its original form in the public records, is the official depiction of the subdivided lands described hereon and will under no circumstances be supplanted in authority by any other form of the plat, whether graphic or digital.
2. There may be additional restrictions that are not recorded on this plat that may be found in the public records of this county.
3. There shall be no Building or other permanent structures or trees or shrubs placed on utility and/or drainage easements except driveways, sidewalks and similar surface construction.

REGINA C. KARNER, PSM
Residential & Commercial Surveying Services

2740 SW MARTIN DOWNS BLVD. BOX 333, PALM CITY, FL 34990
PHONE: 1-772-266 7206 FAX: 1-772-223 8181



Curve Table

CURVE	RADIUS	ARC LENGTH	CHORD BEARING	DELTA ANGLE
C1	100.00'	132.88'	N 52°00'57" E	76°11'36"
C2	100.00'	126.80'	N 53°48'17" E	72°40'57"
C3	40.00'	53.19'	N 52°00'57" E	76°11'36"
C4	140.31'	183.11'	S 51°18'37" W	74°46'27"
C5	NOT PART	OF THIS	PLAT	
C6	80.31'	106.70'	S 51°58'57" W	76°07'36"
C7	25.00'	18.13'	N 87°55'50" E	41°32'29"
C8	70.00'	214.73'	N 44°57'40" W	178°48'17"
C9	25.00'	18.89'	S 21°29'43" W	42°50'44"
C10	70.00'	48.46'	N 23°04'51" E	39°39'26"
C11	70.00'	48.44'	N 16°34'49" W	39°38'51"
C12	70.00'	47.58'	N 55°52'31" W	38°56'33"
C13	70.00'	75.26'	N 77°48'29" E	50°43'50"
C14	70.00'	4.68'	S 49°03'40" W	03°48'52"
C15	NOT PART	OF THIS	PLAT	
C16	20.00'	31.43'	N 44°56'28" W	90°01'35"
C17	75.00'	117.75'	N 45°03'01" E	88°57'23"
C18	75.00'	30.84'	N 17°13'21" E	23°33'24"
C19	75.00'	28.57'	N 39°57'07" E	21°54'09"
C20	75.00'	28.60'	N 62°12'29" E	22°36'34"
C21	75.00'	21.62'	N 81°46'16" E	16°30'57"
C22	350.00'	84.76'	S 33°49'26" W	13°52'29"
C23	350.00'	84.20'	S 47°39'12" W	13°47'03"
C24	350.00'	84.20'	S 81°28'15" W	13°47'03"

CURVE	RADIUS	ARC LENGTH	CHORD BEARING	DELTA ANGLE
C25	350.00'	84.20'	S 75°13'18" W	13°47'03"
C26	350.00'	48.35'	S 85°04'16" W	07°54'52"
C27	140.31'	32.32'	S 82°06'09" W	13°11'21"
C28	140.31'	52.83'	S 84°43'06" W	21°34'18"
C29	140.31'	52.83'	S 43°08'48" W	21°34'18"
C30	140.31'	45.16'	S 23°08'24" W	18°26'31"
C31	75.00'	7.03'	S 02°45'29" W	05°22'20"
C32	NOT PART	OF THIS	PLAT	
C33	100.00'	6.13'	S 15°40'29" W	03°30'39"
C34	50.00'	39.28'	S 22°26'27" E	45°01'36"
C35	NOT PART	OF THIS	PLAT	
C36	NOT PART	OF THIS	PLAT	
C37	230.00'	52.30'	N 06°35'15" E	13°01'47"
C38	230.00'	52.33'	N 19°59'40" E	13°47'03"
C39	230.00'	55.70'	N 33°49'26" E	13°52'29"
C40	230.00'	55.33'	N 47°39'12" E	13°47'03"
C41	230.00'	55.33'	N 61°28'15" E	13°47'03"
C42	230.00'	55.33'	N 75°13'18" E	13°47'03"
C43	230.00'	31.77'	N 85°04'16" E	07°54'52"
C44	170.00'	28.74'	N 85°11'06" E	09°41'12"
C45	170.00'	83.02'	N 66°21'06" E	27°58'48"
C46	170.00'	81.05'	N 38°42'15" E	27°18'55"
C47	170.00'	74.10'	N 12°33'27" E	24°58'26"

Legend:

- D.E. = Drainage Easement (Private)
- U.E. = Utility Easement
- P.C.P. = Permanent Control Point
- P.R.M. = Permanent Reference Monument
- = Found P.R.M., 4"x4" Concrete Monument Unnumber
- = Set P.R.M., 4"x4" Concrete Monument with disc stamped, PSM 4363.
- ⊙ = Set P.C.P., A "PK" Nail and Disc.
- R = Radii of curve
- L = Length of curve
- BRG = Chord Bearing of curve
- Δ = Delta of curve
- CHD = Chord Distance
- Typ. = Typical
- O.R.Book = Official Records Book
- SqFt = Square Feet
- C00 = Curve data to be found in Curve Table